

# MSC09787 19' DYMAXION NET Model# SN9060-20SE

CENTRAL MAST TYPE

NOVEMBER 4, 2008

USE ZONE: 55'X55'

CHILD CAPACITY: 30-40

FALL HEIGHT: 6'

SUGGESTED AGE: 5-12

## INSTALLATION

### ONE WEEK PRIOR TO NET INSTALLATION:

DIG AND POUR FOOTINGS PER DRAWINGS, MAKING SURE TO INSTALL TIE RODS AND CENTRAL ANCHOR.

*Note:* NETS MUST BE INSTALLED ON LEVEL, WELL-PACKED SURFACE.

### MAIN INSTALLATION:

1. SPREAD NET ON GROUND AND SLIDE CENTER VERTICAL POST OVER STUB OF TOP CAP.

*Note:* TOP CAP WILL FIT LOOSELY OVER CENTER POST, BUT ONCE POST IS VERTICAL THE CAP WILL FIT SECURELY.

2. USING THE SUPPLIED SHACKLES, CONNECT THE ENDS OF THE 2 TURNBUCKLES WITH BASE #1 & #2.

3. ERECT THE CENTRAL PIPE BY 45 DEGREE CHECKING THE ALUM CAP LIES IN THE TOP OF CENTRAL POLE AND CONNECTING THE TURNBUCKLES WITH THE BASE # 3.

4. BRING THE CENTRAL POLE TO A FULLY VERTICAL POSITION AND CONNECT THE LAST TURNBUCKLE TO BASE #4.

**Note:** AN EXTRA SHACKLE IS ENCLOSED AND MAY BE USED FOR LENGTH ADJUSTMENT IF NECESSARY.

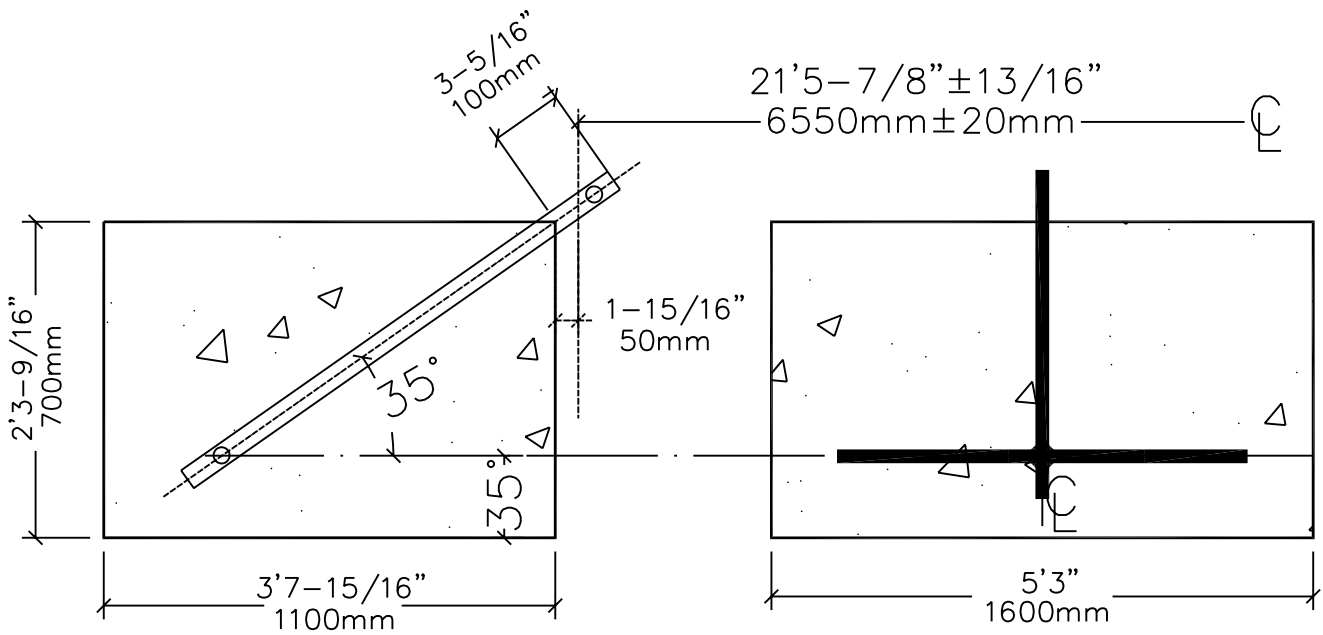
5. TIGHTEN ALL TURNBUCKLES EVENLY, MAKING SURE THAT CENTER VERTICAL POST IS LEVEL IN ALL DIRECTIONS.

**MAINTENANCE:**

ONE WEEK AFTER THE FIRST USE, THE DYMAXION NET MUST BE RE-TIGHTENED AS DONE IN STEP #5 OF THE MAIN INSTALLATION. THIS IS A VERY IMPORTANT STEP TO ENSURE THE NET MAINTAINS THE SAME TENSION AS AT THE TIME OF INSTALLATION.

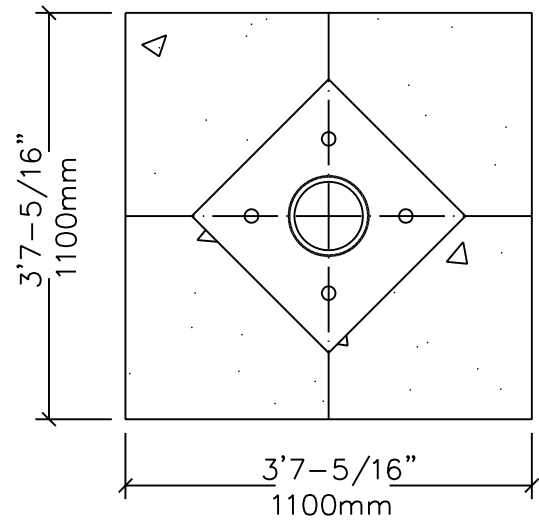
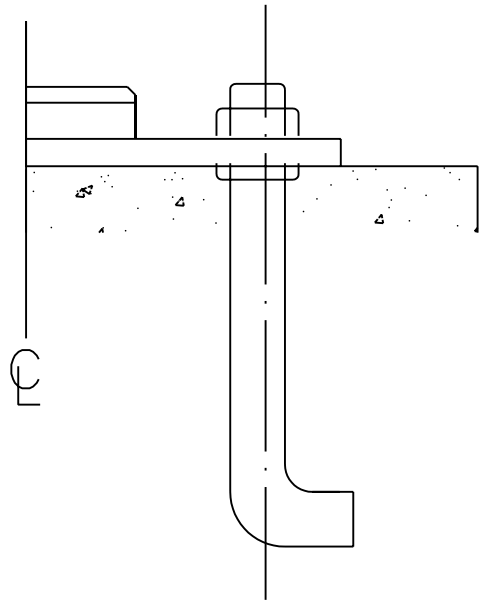
ADDITIONAL RE-TIGHTENING MAY OCCASIONALLY BE NECESSARY IN LONGER INTERVALS BUT IT WILL NOT BE NECESSARY AFTER A MAXIMUM OF THREE TIMES. AFTER THAT, THE NET IS MAINTENANCE-FREE.

REVISIONS				
ZONE	REV	DESCRIPTION	DATE	APPROVED



A. CORNER BASES/TIE RODS-4 PLACES

5'3" x 3'7-15/16" x 2'3-9/16"  
(1,600 X 1,100 X 700MM)

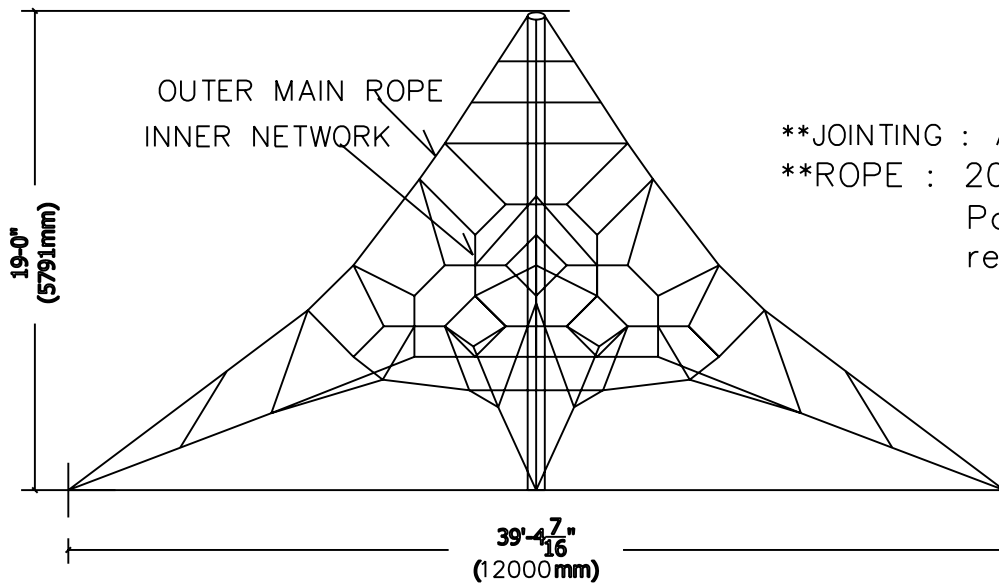


B. CENTRAL BASE/GROUND ANCHOR-1 PLACE

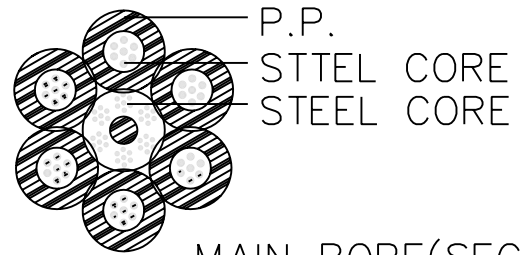
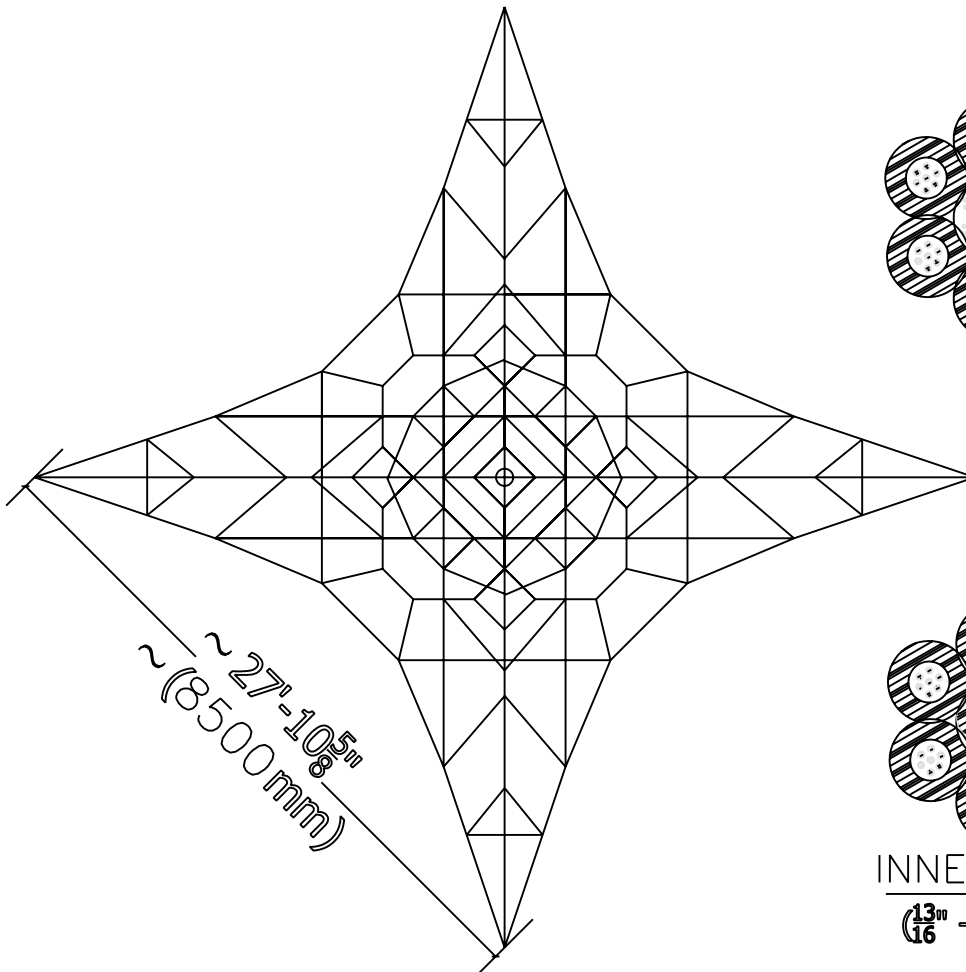
3'7-5/16" x 3'7-5/16" x 2'3-9/16"  
(1,100 X 1,100 X 700MM)

	19' DYMAXION NET		
	(GROUNDWORK #2)		
	MSC09787 - SN9060S-3E		
	SCALE	NONE	SHEET 4 of 4

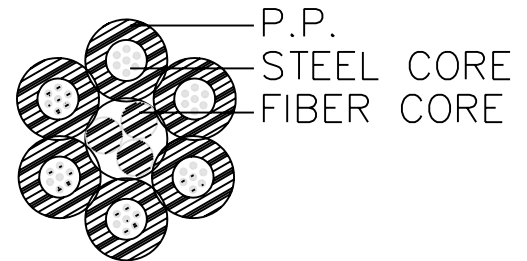
REV



\*\*JOINTING : ALUM ALLOY  
 \*\*ROPE : 20mm/22mm diameter  
 Polyamide (Nylon) Bordeaux  
 red color combination rope



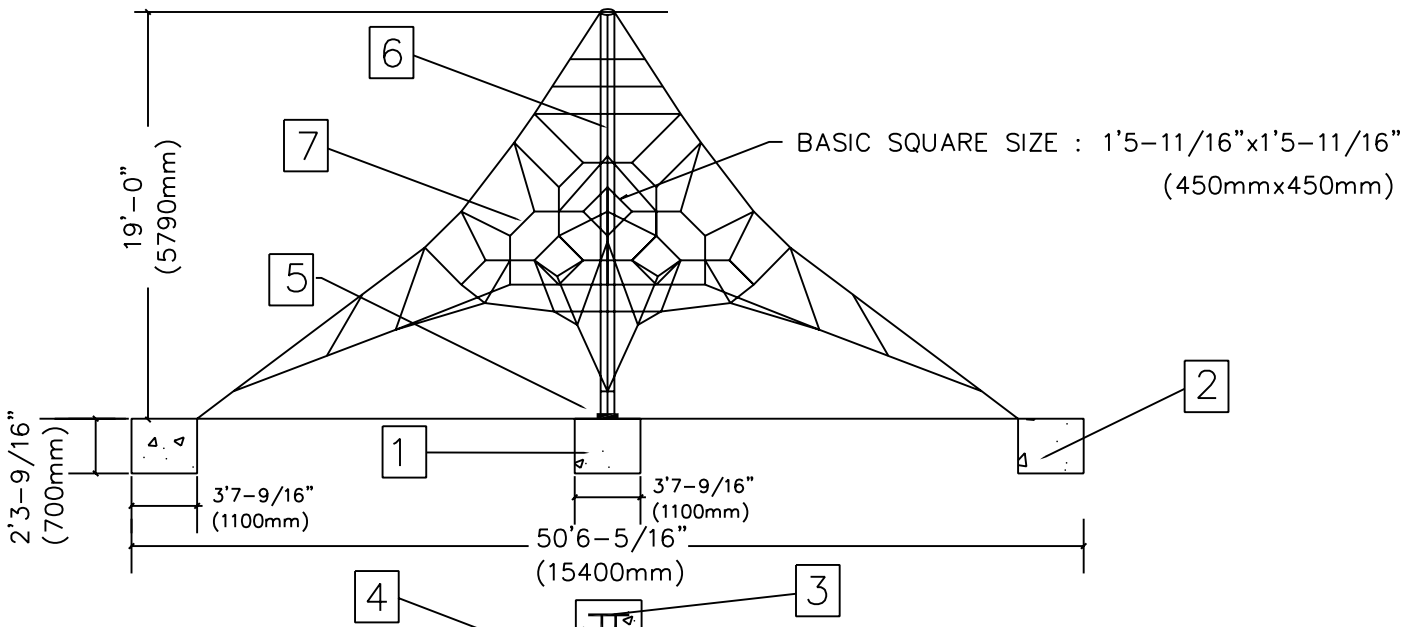
MAIN ROPE (SEC.)  
 ( <sup>7</sup>/<sub>8</sub>" - 22MM O.D )



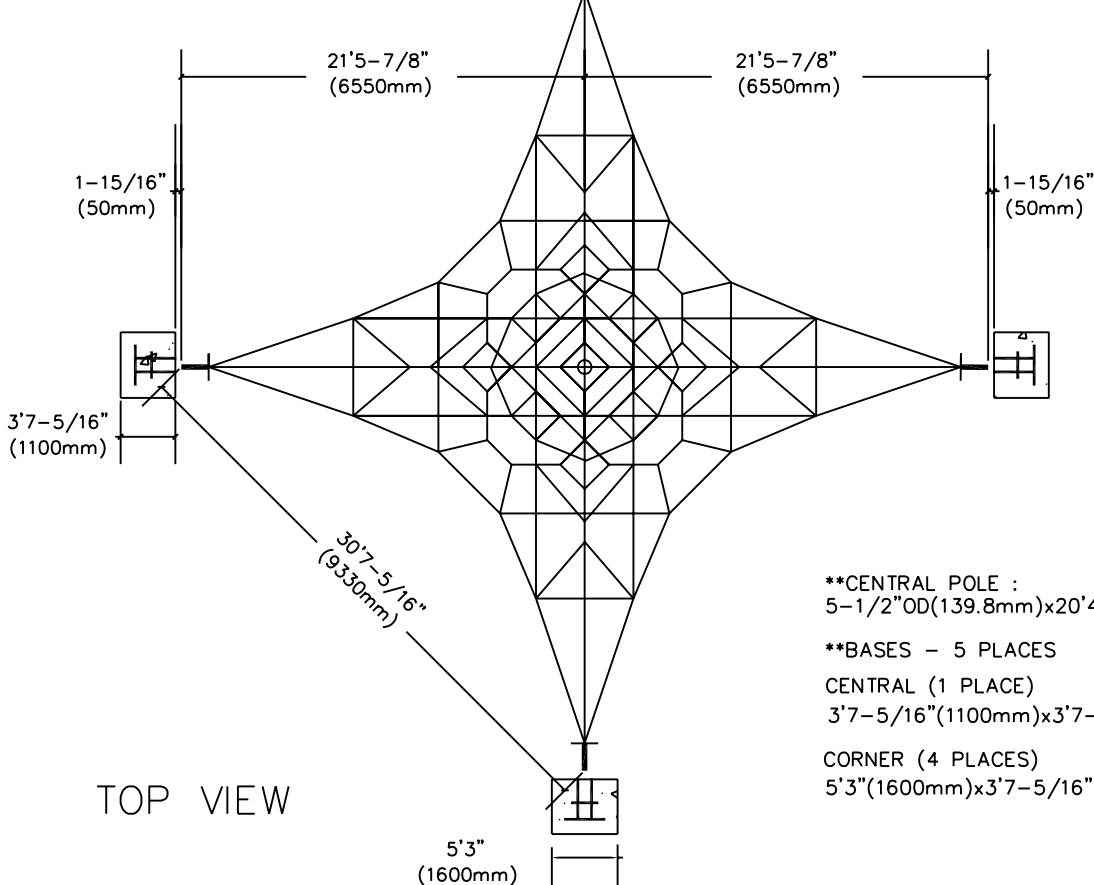
INNER NETWORK (SEC.)  
 ( <sup>13</sup>/<sub>16</sub>" - 20MM O.D )

	19 FT DYMAXION NET
	9.0X9.0X6.0MCABLE NETWORK
	MSC09787 - SN9060-20SE
	SCALE 1/8" = 1' (11x17 paper only) SHEET 1 of 4

REVISIONS				
ZONE	REV	DESCRIPTION	DATE	APPROVED



FRONT VIEW



TOP VIEW

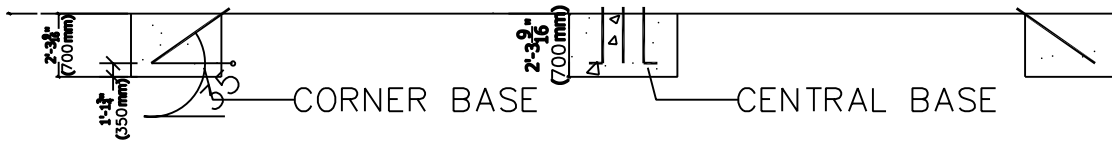
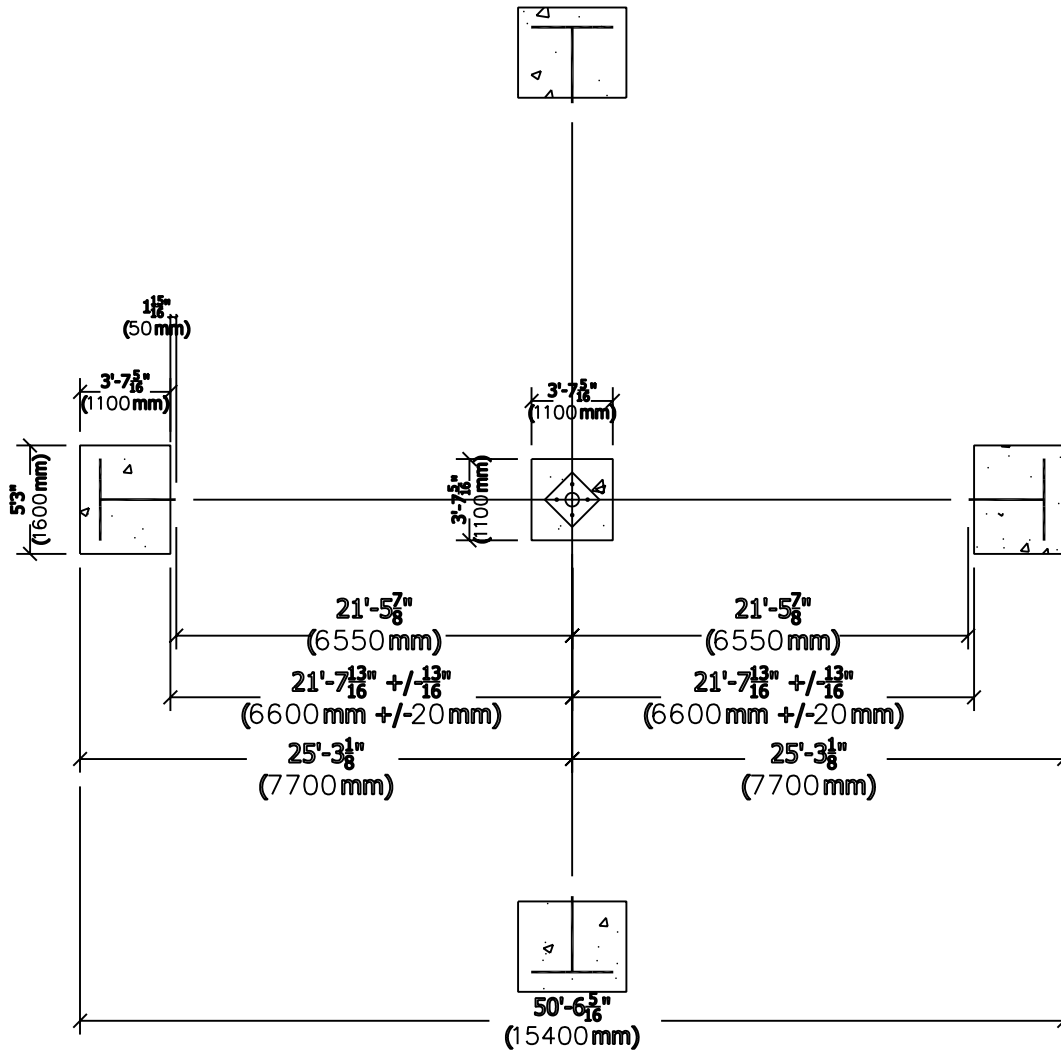
1	BASE, CENTRAL	1
2	BASES, CORNER	4
3	TIE RODS	4
4	TURN BUCKLES	4
5	GROUND ANCHOR FOR 1	
6	CENTRAL POLE	1
7	NET	1

**\*\*CENTRAL POLE :**  
 5-1/2"OD(139.8mm)x20'4-1/8"(6200mm)x1/4"(5.6mm)

**\*\*BASES - 5 PLACES**  
 CENTRAL (1 PLACE)  
 3'7-5/16"(1100mm)x3'7-5/16"(1100mm)x2'3-9/16"(700mm)

CORNER (4 PLACES)  
 5'3"(1600mm)x3'7-5/16"(1100mm)x2'3-9/16"(700mm)

		19' DYMAXION NET		
		INSTALLATION, BASIC		
		MSC09787 - SN9060S-1E		
		SCALE	NONE	SHEET 2 of 4



	19' DYMATION NET	
	GROUNDWORK	
	MSC09787 - SN9060S-2E	
	SCALE NOT TO SCALE	SHEET 3 of 4

REV

# **DYMAXION NET Rope Specification (14' and 19')**

## **Outer Main Rope**

### **7/8" (22 mm) Combination Rope +IWRC**

Dark Red Nylon fibers

6-strand Combination Rope + IWRC (independent wire rope core)

Right regular lay - preformed

Steel wires covered with nylon fibers (PA-fibers)

Min. tensile strength of wire: Galvanized 160 kp/mm<sup>2</sup> = 1570 N/mm<sup>2</sup>

Dimension: 7/8" (22 mm)

Steel area: .127 sq inch (81.9 sq mm)

Construction: 6x8x1.10

Approx. weight: 0.91 kg per meter

Min. breaking load: 28,900 kp

## **Inner network**

### **13/16" (20 mm) Combination Rope +FC**

Dark Red Nylon fibers

6-strand Combination Rope + FC (fiber core)

Right regular lay - preformed

Steel wires covered with nylon fibers (PA-fibers)

Min. tensile strength of wire: Galvanized 160 kp/mm<sup>2</sup> = 1570 N/mm<sup>2</sup>

Dimension: 13/16" (20 mm)

Steel area: .05 sq inch (30.5 sq mm)

Construction: 6x8x0.90

Approx. weight: 0.46 kg per meter

Min. breaking load: 11,500 kp