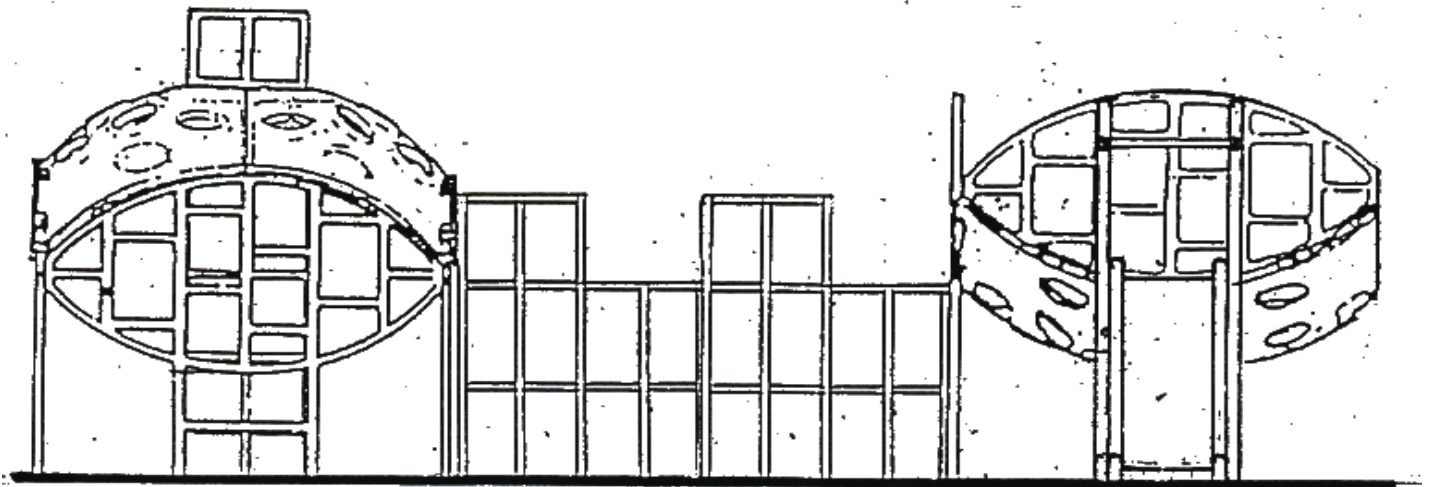


# 111-440 FUNSCAPE (w/ Plastic Slide)

**\* IMPORTANT \***

PLEASE RETAIN THIS INSTRUCTION SHEET IN YOUR FILES. IT CONTAINS IMPORTANT REPLACEMENT PARTS INFORMATION. ALL EQUIPMENT SHOULD BE INSTALLED IN ACCORDANCE WITH THESE INSTRUCTIONS. IT IS IMPORTANT TO USE AND MAINTAIN ALL PUBLIC PLAYGROUND EQUIPMENT PROPERLY. PLAYGROUND EQUIPMENT, WHICH IS IMPROPERLY MAINTAINED, CAN CAUSE SERIOUS INJURY. PERIODICAL INSPECTIONS, MAINTENANCE, REPAIR AND/OR REPLACEMENT OF DAMAGED PARTS IS NECESSARY FOR SAFE OPERATION OF EQUIPMENT AND SAFETY OF USERS. RESILIENT SURFACING SHOULD BE USED UNDER ALL PLAYGROUND EQUIPMENT. APPROPRIATE PUBLICATIONS, AVAILABLE AT NO CHARGE, FROM THE CONSUMER PRODUCT SAFETY COMMISSION, INCLUDE "A HANDBOOK FOR PUBLIC PLAYGROUND SAFETY." YOU CAN RECEIVE YOUR FREE COPY BY CALLING 1-301-504-7908.



**PACKING LIST**

1 CTN	1	Hardware	Bag		
1 CTN	3	103-008	Ring		
	4	103-006	Ring		
1 CTN	9	103-006	Ring		
1 CTN	1	113-306	2-Ring Ladder		
1 CTN	2	103-029A	Grille		
2 CTN	2	103-027A	Grille		
1 CTN	2	103-310	Leg Assy		
1 CTN	4	103-305	Leg Assy		
1 BLD	4	103-650	Upright		
	1	403-317	Entrance Rail		
1 BLD	5	103-652	Upright		
2 BLD	4	103-654	Upright		
1 BLD	4	103-670	Upright		
2 WF	1	403-239	Platform Guard Rail Assy		
1 WF	1	313-426	Platform		
1 WF	1	383-300	Slide Leg		
1 SLIDE	1	435-595	Plastic Slide		
1 SHELL	1	113-044	Shell		
1 SHELL	1	113-044	Shell		
9 CTN	5 BDL	4 WF	2 SHELLS	1 SLIDE	
21 TOTAL PCS WT 1,067# CLASS 70					

**HARDWARE BAG**

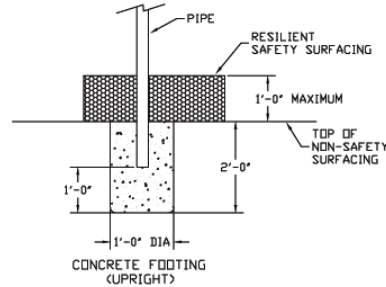
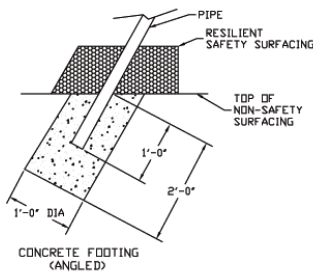
2	-	113-230	Attach Angle/Platform
2 PR	-	415-513	1 3/8" T-Clamp
13	-	105-015	1 5/8" Aluminum Pipe Plug
8	-	355-900	1 5/8" Plastic Pipe Plug
4	-	116-556	5/16" x 4" Button Head Bolt
6	-	116-555	5/16" x 3 1/2" Button Head Bolt
48	-	116-545	5/16" x 2 1/2" Button Head Bolt
28	-	116-540	5/16" x 2" Button Head Bolt
4	-	116-535	5/16" x 1 1/2" Button Head Bolt
14	-	116-530	5/16" x 1" Button Head Bolt
6	-	116-604	5/16" x 1" Hex Head Bolt
80	-	316-601	3/8" Flat Washer
12	-	316-501	5/16" Flat Washer
6	-	326-601	3/8" Lock Washer
105	-	326-501	5/16" Lock Washer
2	-	226-501	5/16" Lock Nut
105	-	216-512	5/16" Button Head Nut
2	-	416-350	3/16" Socket Key
2	-	805-532	Warning Labels
2	-	805-534	SportsPlay Label
1	-		Maintenance Checklist

9 CTN	5 BDL	4 WF	2 SHELL	1 SLIDE	21 TOT. PCS.	1067# TOT. WT.	Class 70
-------	-------	------	---------	---------	--------------	----------------	----------

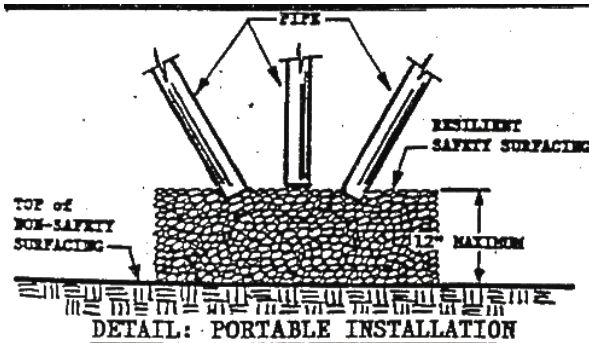
# 111-440 FUNSCAPE (w/ Plastic Slide)

## GENERAL USE/FALL ZONE & FOOTING RECOMMENDATIONS

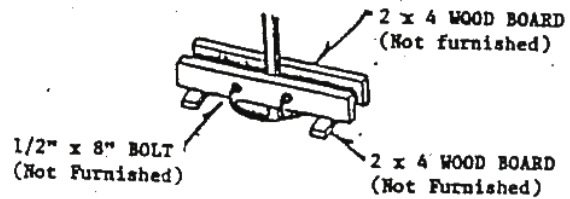
STATIONARY & PORTABLE EQUIPMENT - USE/FALL ZONES SHOULD EXTEND A MINIMUM OF 6 FEET IN ALL DIRECTIONS FROM THE PERIMETER OF THE EQUIPMENT GROUND SPACE. THIS AREA SHOULD BE COVERED WITH THE REQUIRED AMOUNT OF RESILIENT SAFETY SURFACING MATERIAL. FOR SOME EQUIPMENT - USE/FALL ZONES CAN OVERLAP. SEE CONSUMER PRODUCT SAFETY COMMISSION GUIDELINES. DIAMETER & DEPTH OF FOOTINGS ILLUSTRATED ARE SATISFACTORY IN MOST APPLICATIONS FOR PIPE SIZES UP TO 2 3/8" DIAMETER. VARYING SOIL & CLIMATIC CONDITIONS MAY REQUIRE DEEPER & HEAVIER FOOTING IN SOME AREAS. CHECK LOCAL BUILDING CODES.



- If resilient surfacing is to be less than 12", then additional pipe should be put in concrete to maintain proper finish grade for equipment.

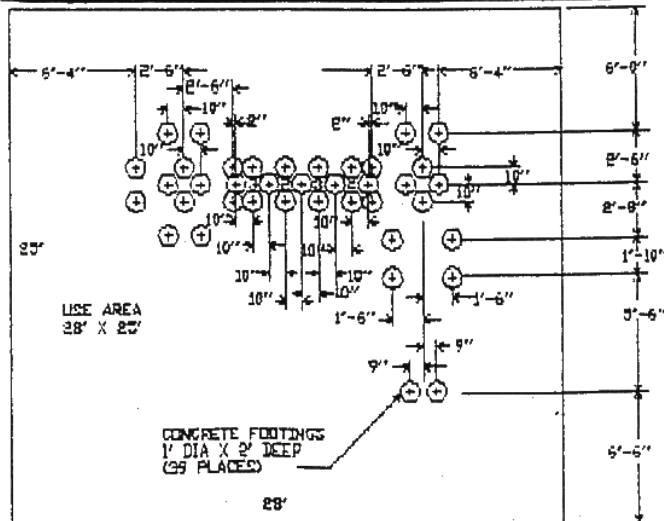


### SUGGESTED BRACING METHOD:



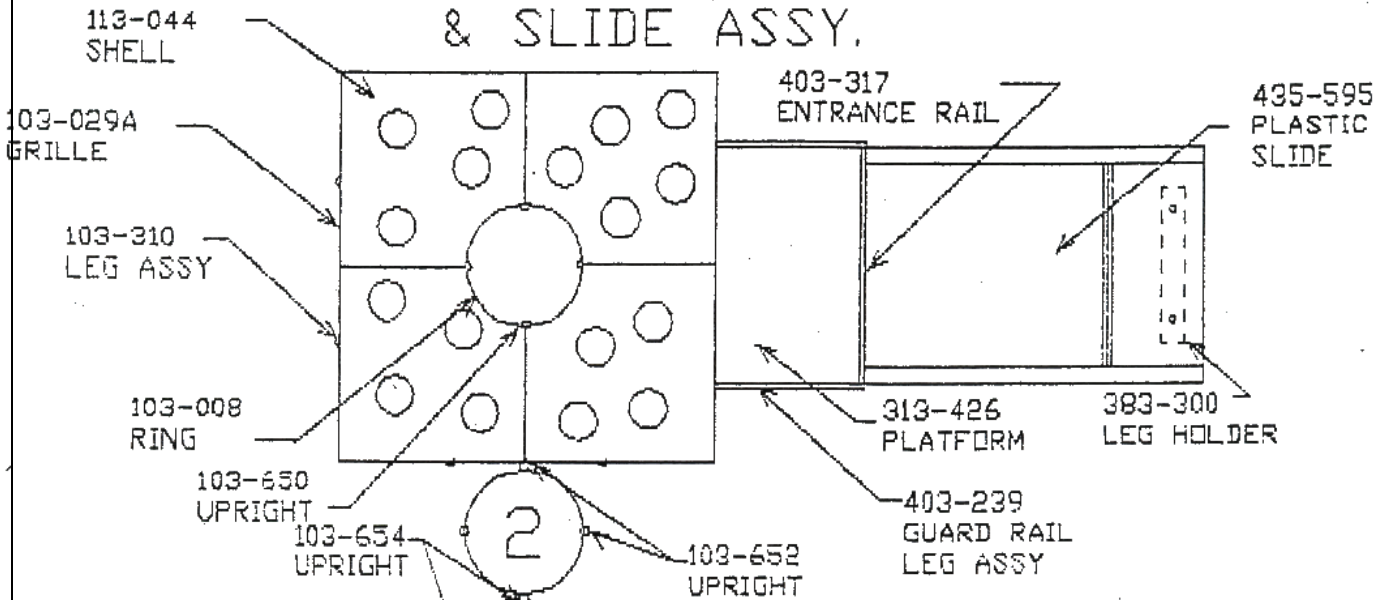
### DETAIL: PERMANENT INSTALLATION

### USE AREA & FOOTING LAYOUT:

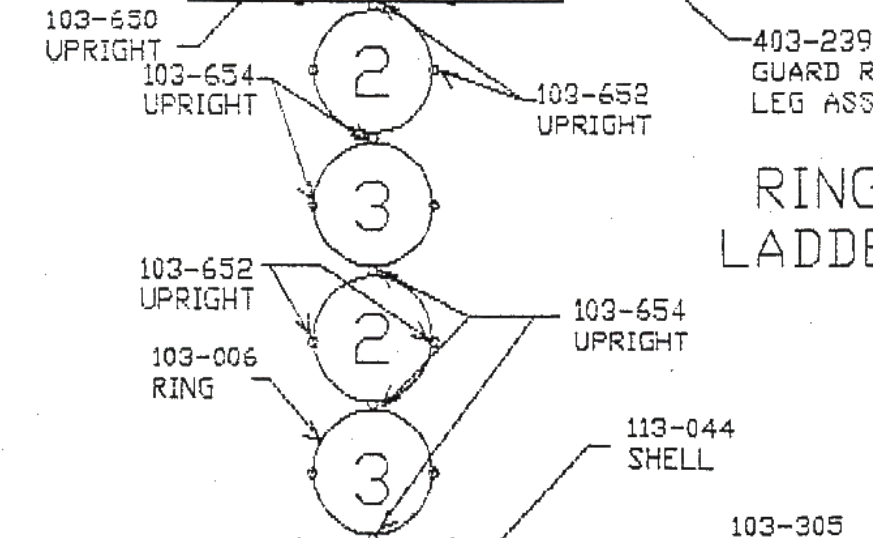


**111-440 FUNSCAPE (w/ Plastic Slide)**

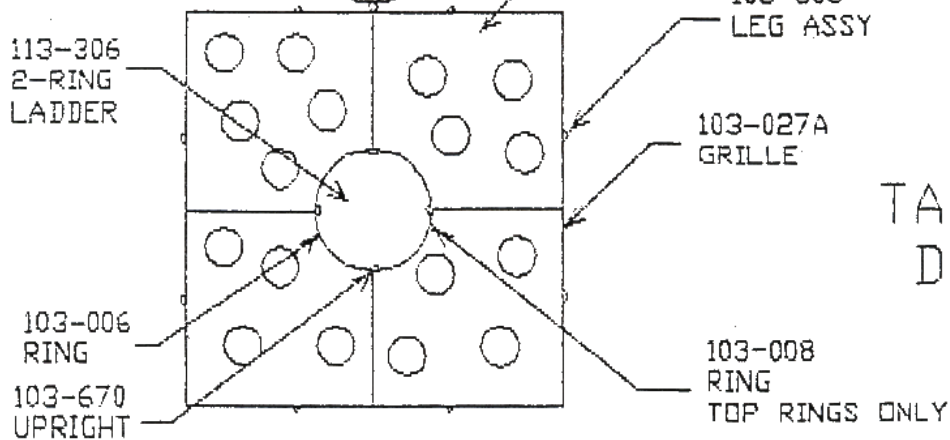
**SMALLER DOME  
& SLIDE ASSY.**



**RING  
LADDERS**



**TALLER  
DOME**



# 111-440 FUNSCAPE (w/ Plastic Slide)

## GENERAL ASSEMBLY INSTRUCTIONS:

Check all the parts and hardware with the packing list to be sure you have received everything needed to assemble this product. CONTACT YOUR LOCAL DISTRIBUTOR WITH NOTIFICATION OF ANY MISSING OR DAMAGED PARTS. Contact must be made within ten days of receipt of your order.

Only hand-tighten nuts & bolts on initial assembly. Final tightening should be done **EVENLY** after final assembly when unit has been plumbed and leveled. After assembly is complete, **ANY ENDS OF BOLTS PROTRUDING BEYOND NUTS SHOULD BE CUT OFF AND/OR PEENED OVER TO REMOVE ANY SHARP PROJECTIONS.** Go over entire unit to file smooth any sharp edges or projections that may have been caused by rough handling in shipping or installation. T-Clamps are designed for both one and two bolt connections. In many situations only one bolt is required. See specific assembly instructions.

On products with platforms installed 1 - 2 degrees off level to facilitate water drainage.

## GENERAL MAINTENANCE INSTRUCTIONS:

Check **MONTHLY** for loose bolts, damaged or broken parts. Tighten and/or replace immediately.

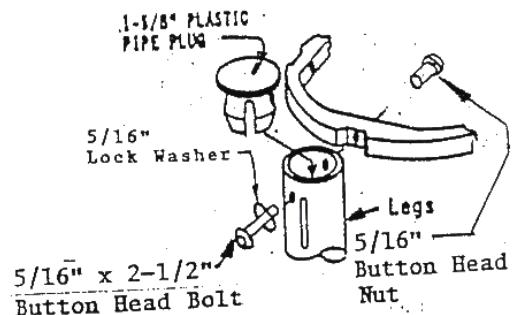
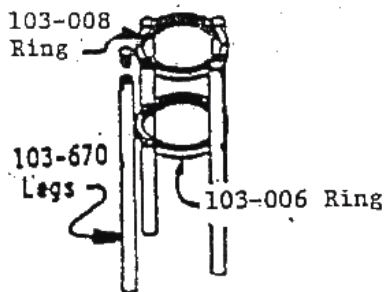
## SPECIFIC ASSEMBLY INSTRUCTIONS:

Note: All threaded ends of bolts protruding beyond nuts must be cut off and/or peened to eliminate sharp edges. No more than two threads should extend beyond face of nut. All washers, "T" nuts, and other fastener hardware used on round pipe or tubing must be hammered down to conform to the curved underlying surface to eliminate catch points.

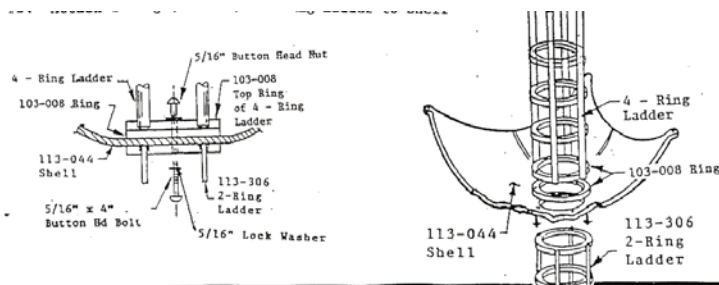
NOTE: Slides should be installed in shaded areas or face NORTH to prevent burns & glare problems caused by direct Sun on the Slide's Chute.

STEP #1: Dig footing holes per SKETCH on Previous PAGE.

STEP #2: Begin w/ Taller Dome first. Assemble 4-Ring Ladder. All RINGS (103-006 & 103-008) have molded ejection marks on the BOTTOM slide. Make sure Ring (103-008) with drilled holes is the top Ring.



STEP #3: Attach 2-Ring (113-306) & 4-Ring Ladder to Shell



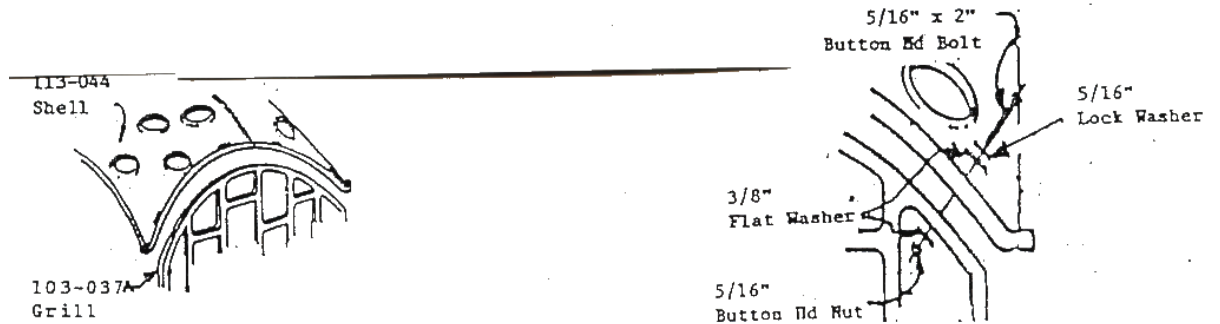
# 111-440 FUNSCAPE (w/ Plastic Slide)

STEP #4: Attach brace to 4-Ring Ladder to hold proper height when assembly is turned over. Length of Pipe Legs below intended level of Resilient Surfacing should be 24". Two long braces holding 2 legs each are recommended. Carefully turn over & place in footing holes.

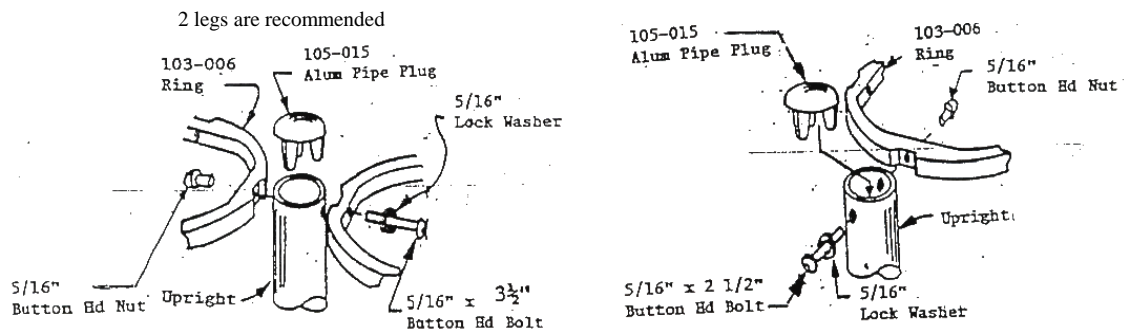
STEP #5: Attach Grilles (103-027A) to Leg Assy.



STEP #6: Attach Grilles (103-027A) to Shell (113-044)



STEP #7: Next assemble 2 & 3-Ring Ladders. Position assembled Ladder Assy. in footings holes after attaching braces to hold proper height. Length of pipe legs below intended level of Resilient Surfacing should be 24". Two long braces holding 2 legs are recommended.

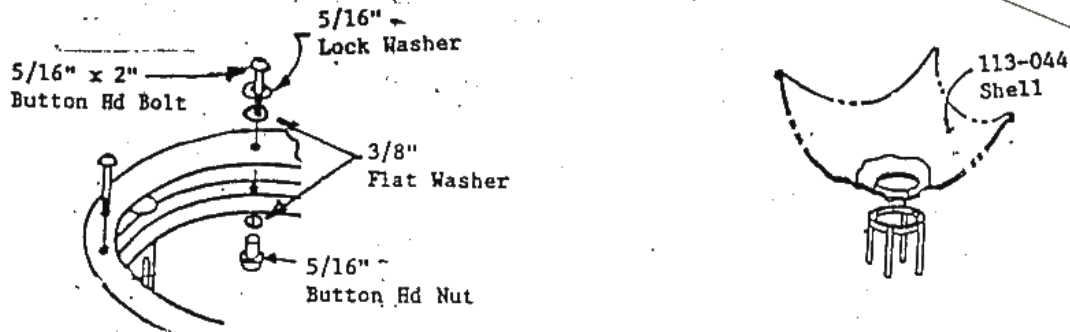


STEP #8: Finally assemble Smaller Dome & Slide Assy.

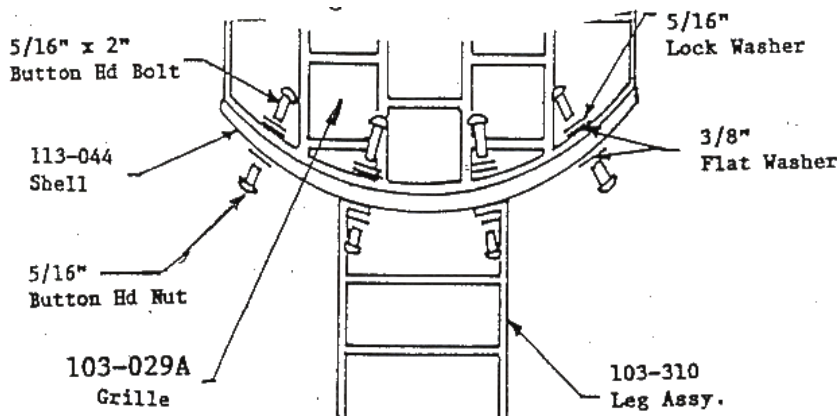
STEP #9: Finally assemble Smaller Dome and Slide Assy. Assemble Bottom Ring Ladder. Cast Aluminum Rings have mold ejection marks on the BOTTOM Side. Drive Plastic Pipe Plugs into top of Uprights. Position assembled Ladder in footing holes after attaching braces to hold proper height. Length of pipe legs below intended level of Resilient Surfacing should be 24". Two long

# 111-440 FUNSCAPE (w/ Plastic Slide)

braces holding 2 legs are recommended. See STEP #2 for Hardware.  
STEP #10: Attach inverted Shell to bottom Ladder.



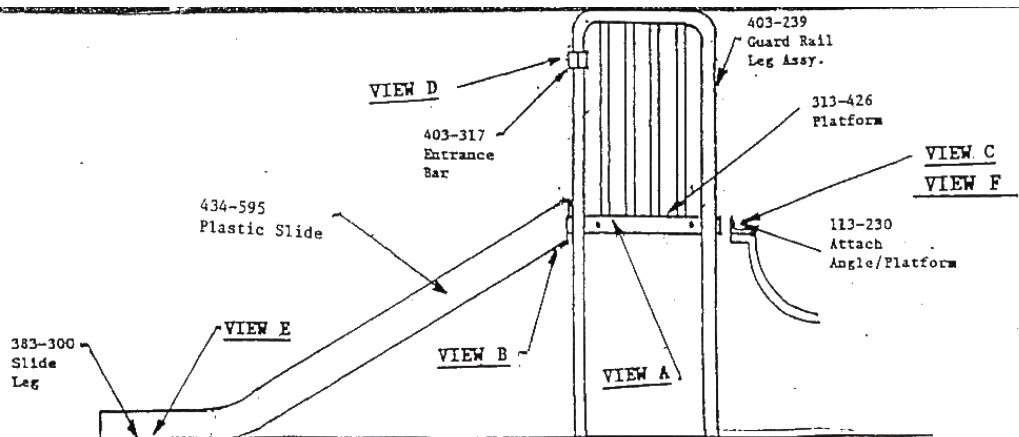
STEP #11: Attach Grille to Shell & Leg Assemblies.



NOTE: All threaded ends of bolts protruding beyond nuts must be cut off and/or peened to eliminate sharp edges. No more than two threads should extend beyond face of nut.

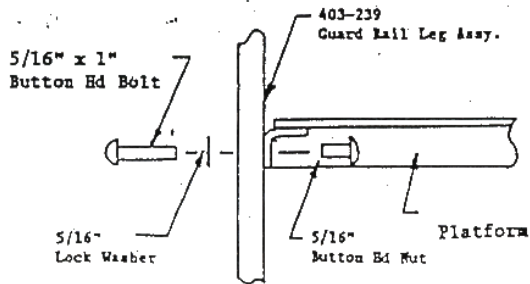
All washers, "T" nuts, and other fastener hardware used on round pipe or tubing must be hammered down to conform to the curved underlying surface to eliminate catch points.

- STEP #12: Attach Slide Platform Guard Rails & Entrance Bar to Slide Platform on the ground, and then attach to Platform. SEE VIEW A & D.
- STEP #13: Attach Platform to Shell. SEE VIEW C & F. Brace in footing holes.
- STEP #14: Attach Slide Legs to Slide. SEE SKETCH.
- STEP #15: Attach Slide to Platform. SEE VIEW B. Brace in footing holes.
- STEP #16: Plumb and level entire unit. Tighten all nuts & bolts so that lock washers are flat. Pour concrete. Wait 48 hours before removing braces, installing Resilient Surfacing, & using equipment.
- STEP #17: Attach Warning Label and Manufacturer's Identification Label to a clean surface. The Labels should be attached in a location where they are clearly visible and legible and away from normal hand and foot placement areas. The Labels must be replaced if they become illegible, destroyed, or removed. Contact your Distributor for replacement Labels.

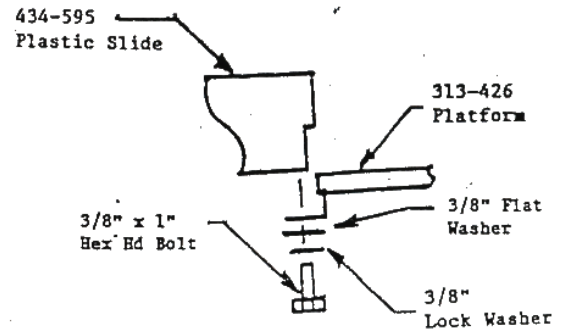


# 111-440 FUNSCAPE (w/ Plastic Slide)

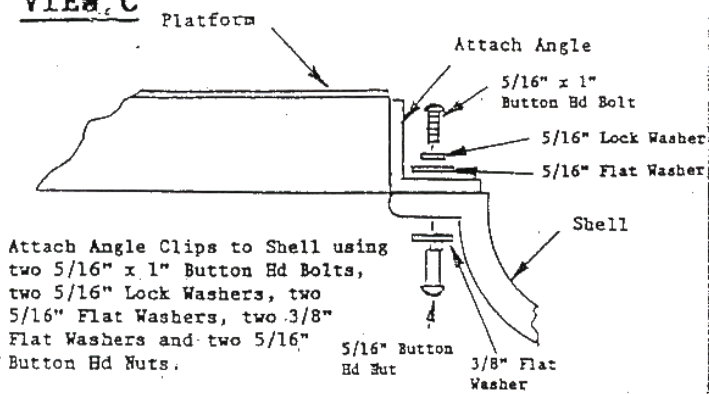
**VIEW A**



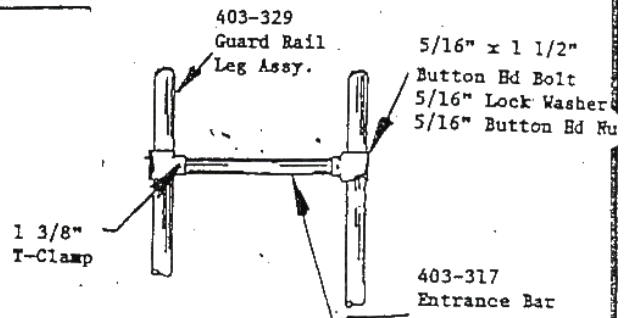
**VIEW B**



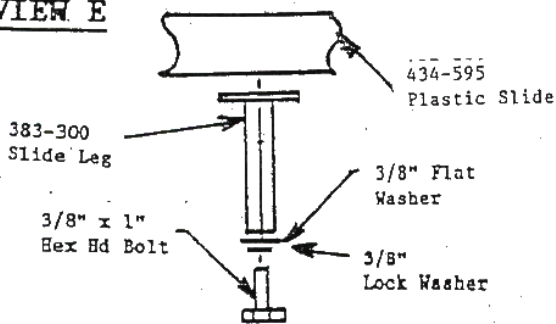
**VIEW C**



**VIEW D**



**VIEW E**



**VIEW F**

