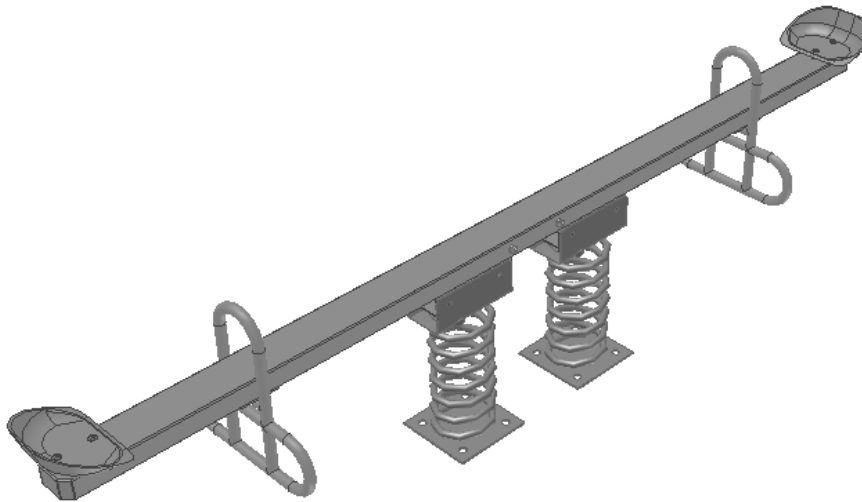


TWO SEAT TEETER TOTTER Assembly Instructions



- Please read and follow all **Safety Information**.
- Please review assembly and component **Diagrams**.
- Verify **component & hardware** quantities received.
- Familiarize yourself with the **installation procedures**.

Safety

- Please follow assembly procedure in the correct order.
- Play site ground material should only be of an approved, shock-absorbing type and meet minimum depth requirements. **NEVER** install playground equipment over paved or hard surfaces.
- Please be sure that all fasteners are used in the proper location.
- Be sure that minimum fall zone requirements are met.
- Do not allow children to play on or near equipment which is in need of repair or replacement, is incomplete or is otherwise considered unsafe.

1) **Parts Inventory and Set-Up**

Confirm that all components, hardware and special tools are included (see **Parts List**). Gather any addition tools necessary for installation (hex driver, level, tape measure, etc) Please follow diagrams and instructions in order.

2) **Site location and Preparation**

Be sure site is of adequate size- allow for minimum fall zones (see **Layout Diagram**). Be sure site is graded, level and free of debris for proper set-up and assembly. Measure and mark site to determine Teeter Totter location and orientation.

3) **Assembly- General**


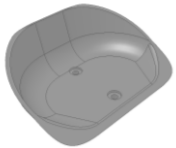


Please use correct type and length fasteners as described in the installation procedure. Before setting Teeter Totter in place, verify all hardware has been tightened. Be sure to follow the order of assembly to ease the construction procedure.

3) **Installation Procedure**



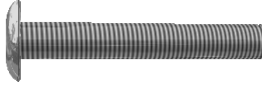

After measurement and layout of site, carefully measure for spring anchor locations. Assemble Teeter Totter as per instructions before setting into the ground. After spring anchors have been set, do not use Teeter Totter for (3) days min.

PARTS LIST





Metal Components:

Item	Qty.	Description	Drawing	Part Number
SA	(2)	Spring Assembly		170-00014
SB	(2)	Cast Aluminum Seat		175-00013
SC	(2)	Hand and Foot Bar		175-00010
SD	(1)	Main Beam		175-00011


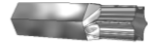
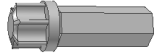
Hardware Components:

Item	Qty.	Description	Drawing	Part Number
HA	(8)	5/16" x 3/4"lg SS Torx Bolt		100-51634
HB	(4)	5/16" x 2-3/4" SS Torx Bolt		100-516234
HC	(2)	3/8" X 4" Stainless Torx Bolt		100-384
HD	(2)	3/8" Stainless Barrel Nut		100-38BN

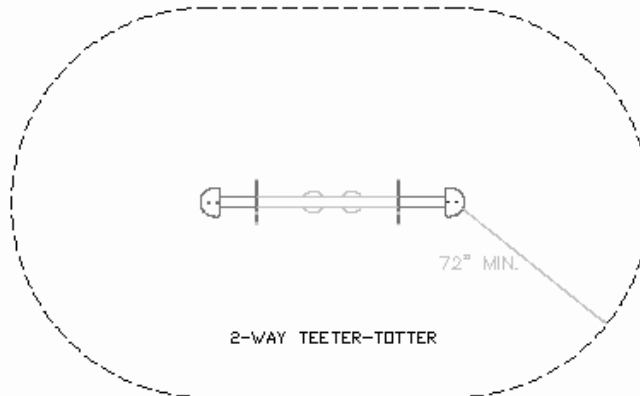
HARDWARE INCLUDED IN 0-SPRANCHORKIT:

HJ	(8)	½” Anchor Bolt		100-12ABG
HK	(8)	½” Flat Washer		100-12FWG
HL	(8)	½” Lock Washer		100-12LWG
HM	(8)	½” Hex Nut		100-12HNG

Tools:

Item	Qty.	Description	Drawing	Part Number
TA	(1)	Torx T-40 Driver Bit		100-00T40
TB	(1)	Torx T-45 Driver Bit		100-00T45
TC	(1)	Torx T-55 Driver Bit		100-00T55

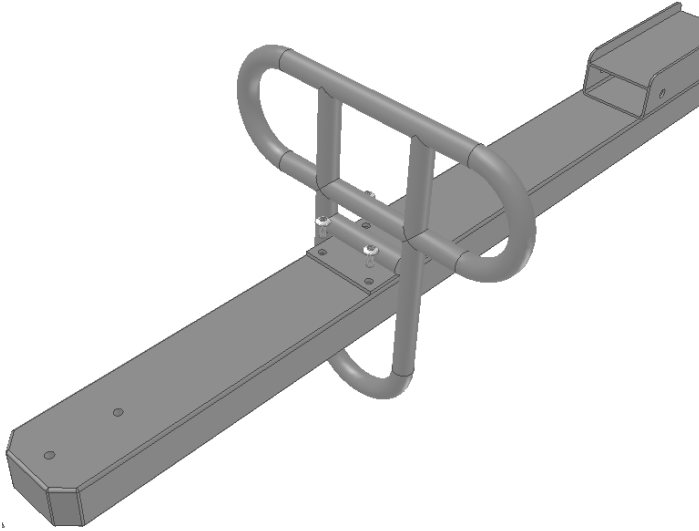
LAYOUT DIAGRAM:



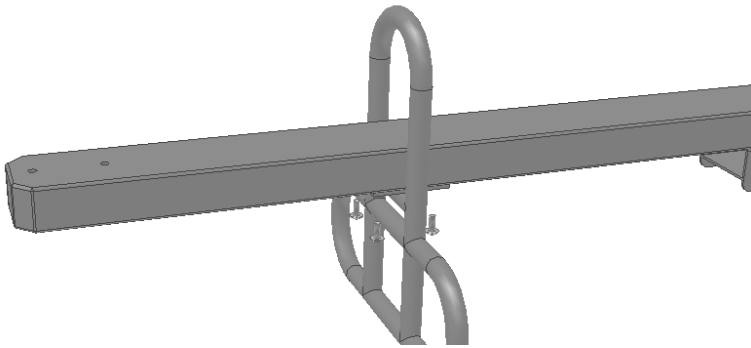
NOTE: Overhead views are for planning purposes only.
Please follow guidelines as specified by the CPSC and ASTM F1487.

INSTALLATION PROCEDURE:

- 1) Locate Main Beam (SD) and (2) Hand and Foot Bars (SC). Assemble as shown using (4) ¾” Torx Bolts (HA) per side. Tighten with T-40 Torx tool provided.

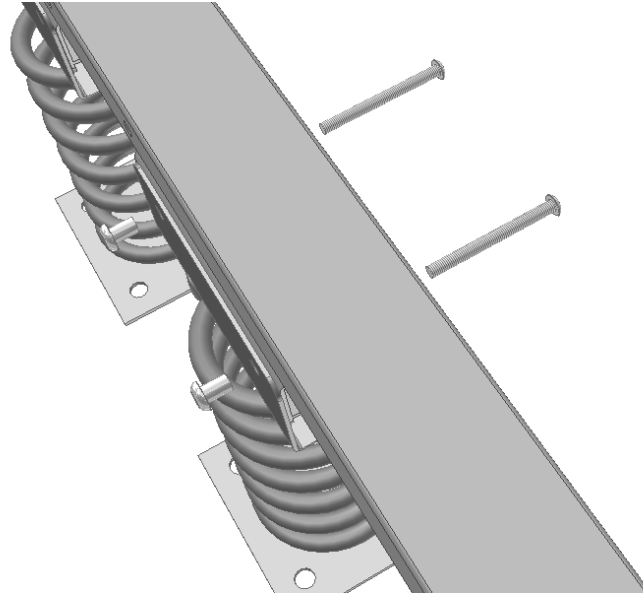


Step 1- Mounting Hand and Foot Bars NOTE: Bottom View shown.



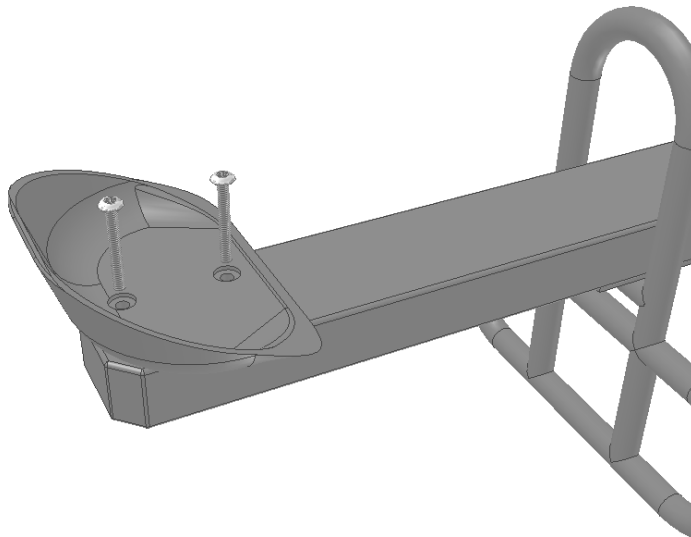
Step 1- (Top View)

- 2) Next, mount (2) Spring Assemblies (SA) onto Main Beam as shown, using (2) 4" Torx Bolts (HC) and (2) Barrel Nuts (HD) per Spring unit. Align holes and tap Barrel Nuts through spring mount and Main Beam mounting holes (one side only) Use T-45 Torx tool (TB) on bolt head and T-55 Torx Tool (TC) on Barrel nuts-fully tighten fasteners.

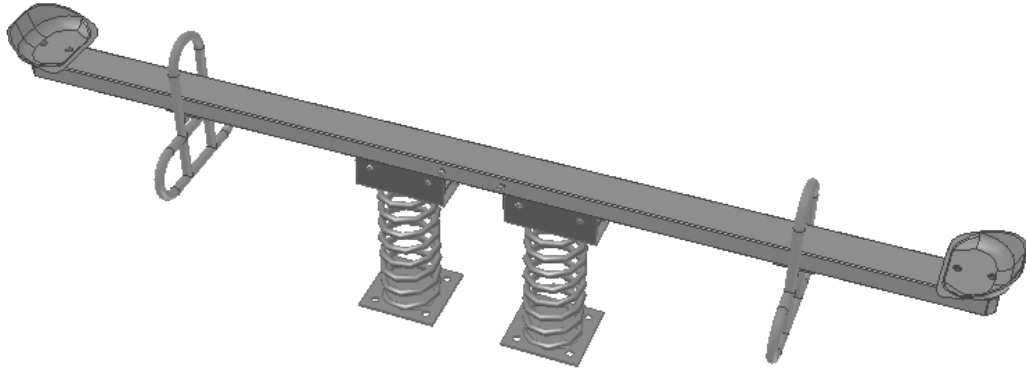


Step 2- Mounting Spring Assemblies to Main Beam

- 3) Mount (2) Cast Aluminum Seats (**SB**) through top holes and into threads in bottom of Main Beam using (2) 2-3/4" Torx Bolts (**HB**) per seat as shown.

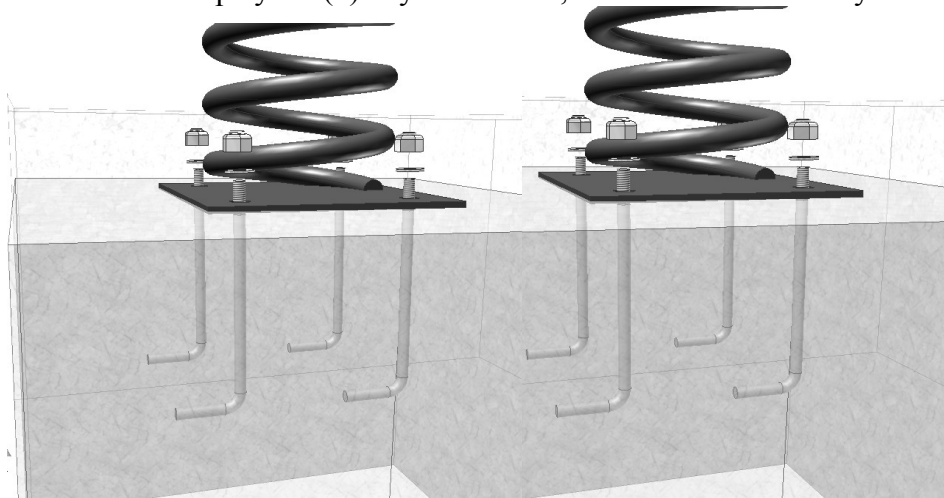


Step 3-Mounting Cast Aluminum Seats to main beam.

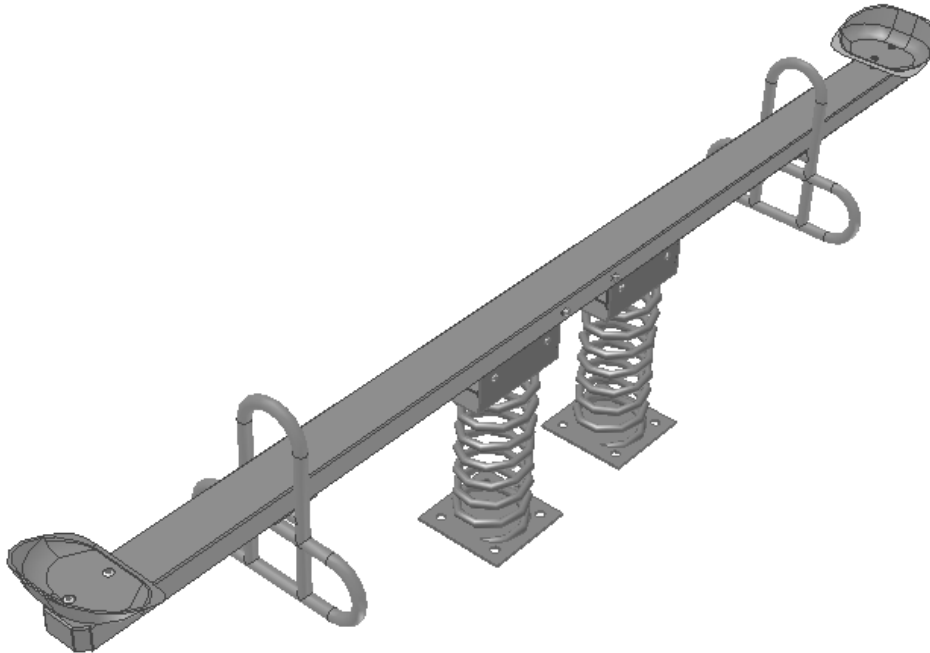


Step 4-Assembled Teeter Totter ready for ground anchors.

- 4) After a proper site has been chosen and prepared- measure, mark and dig holes approx. 12” square by 18” deep. Mix and pour concrete. Note: do not fill to top, leave at least 2” below ground level to later cover with dirt. **Loosely** assemble anchor hardware : (8) ½” Anchor Bolts (**HJ**), (8) Flat Washers (**HK**), (8) Lock Washers (**HL**) and (8) Hex Nuts (**HM**) All included in kit 0-SPRANCHORKIT through bottom plates on Teeter Totter. Carefully lower assembly onto poured concrete, securely prop Teeter Totter with wooden braces or similar temporary structure until concrete has cured. After concrete has set, securely tighten anchor bolts and cover top of footers with dirt- tamp until level with ground. Do not allow play for (3) days minimum, until concrete has fully set.



Step 5- Footers- “J” Bolt Hardware detail



Completed Two Seat Teeter-Totter

Rev	Date	Init.	Remarks
A	12/05/05	BTM	Manual created.
B	08/25/06	BTM	Added anchor bolt h/w kit and info.