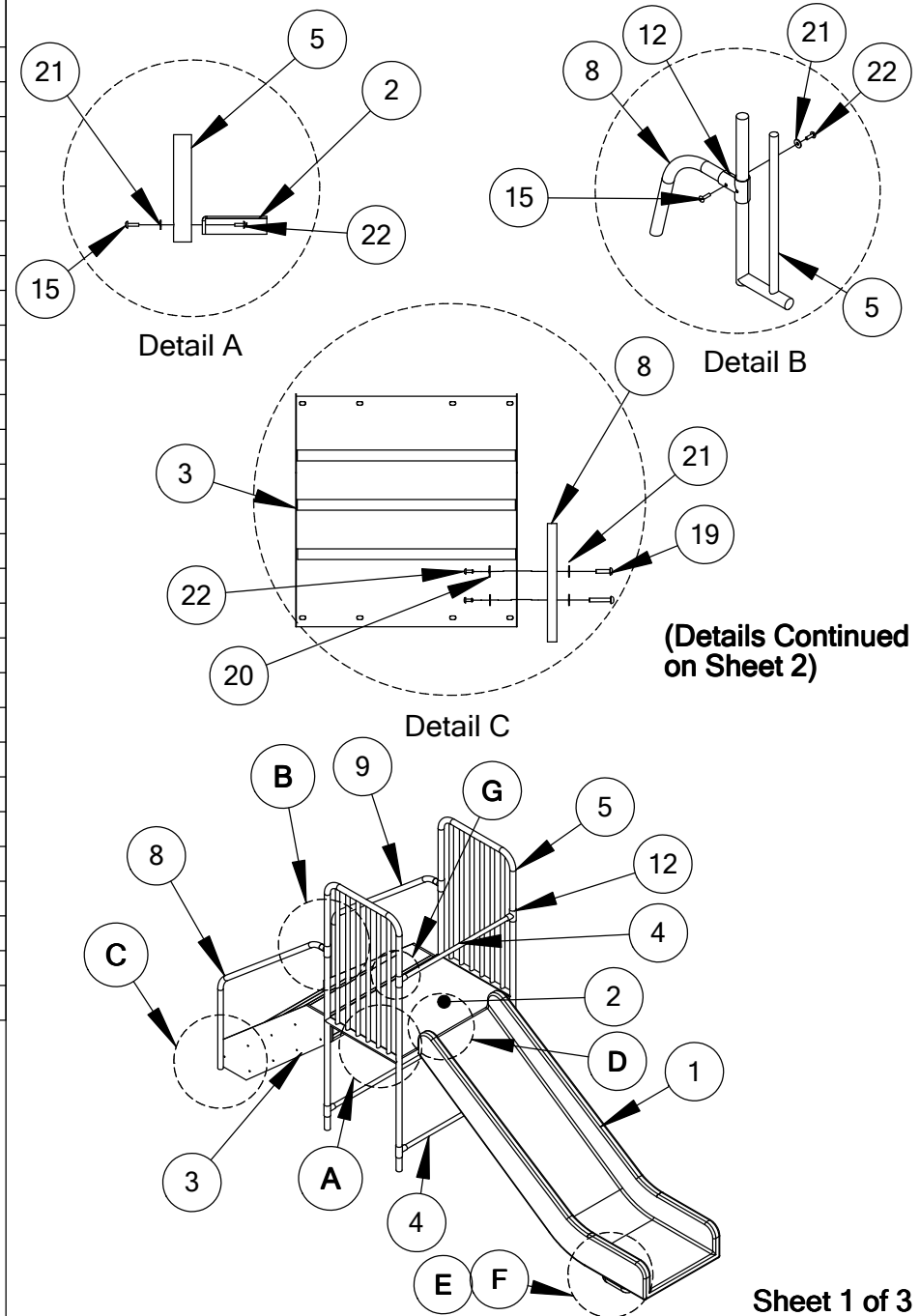




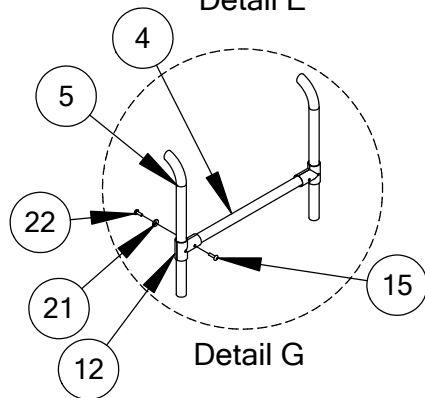
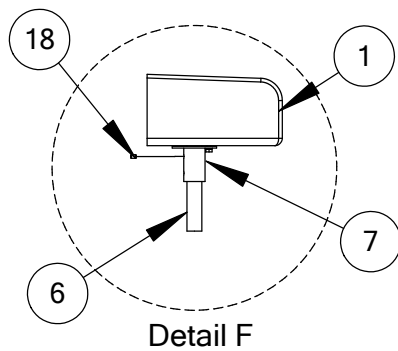
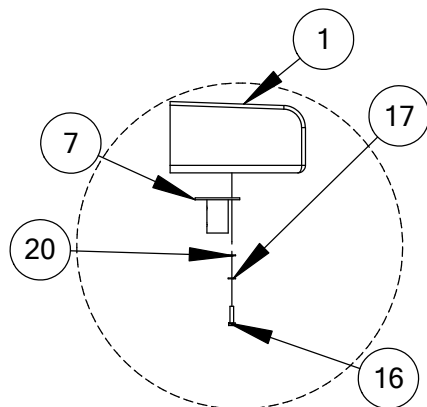
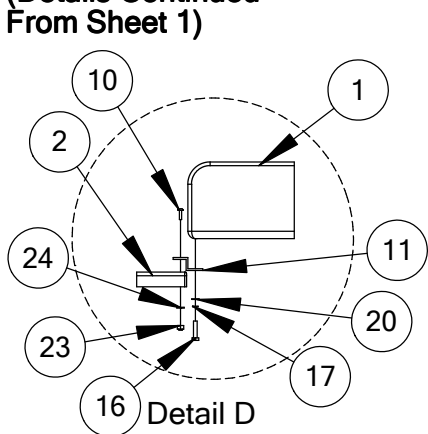
JR SLIDER

311-145

ITEM NO.	PART NUMBER	DESCRIPTION	QTY.
1	435-600	Slide Bedway	1
2	313-428	Platform	1
3	905-707	Stair	1
4	403-317	Entrance Rail	3
5	403-248	Guard Rail Leg Assembly	2
6	103-306	Slide Leg	1
7	314-460	Leg Holder	1
8	383-461	Right Stair Hand Rail	1
9	383-962	Left Stair Hand Rail	1
10	126-504	5/16" x 1" Carriage Bolt	3
11	435-405	Attachment Bracket	1
12	415-513	1-3/8" "T" Clamp	6pr
13	226-602	3/8" Nylon Insert Lock	2
14	126-704	3/8" x 3/4" Button Head Bolt	2
15	116-530	5/16" x 1" Button Head Bolt	12
16	116-604	3/8" x 1" Hex Bolt	7
17	326-601	3/8" Lock Washer	7
18	196-802	1/2" x 1/2" Socket Set Screw	2
19	116-545	5/16" x 2-1/2" Button Head Bolt	2
20	316-601	3/8" Flat Washer	15
21	326-501	5/16" Lock Washer	14
22	216-512	5/16" Button Head Nut	10
23	226-501	5/16" Lock Nut	6
24	316-501	5/16" Flat Washer	8
25	416-350	3/16" Socket key	2
26	805-532	Warning Label	2
27	805-534	SportsPlay	2
28	000-000	Maintenance Check List	1



(Details Continued From Sheet 1)



IMPORTANT

Please retain this instruction sheets in your files. It contains important replacement parts information. All equipment should be installed in accordance with these instructions.

It is important to use and maintain all public playground equipment properly. Playground equipment which is improperly maintained can cause serious injury. Periodical inspections, maintenance, repair and/or replacement of damaged parts is necessary for safe operation of equipment and safety of users. Resilient Surfacing should be used under all playground equipment. Appropriate publications, available at NO Charge, from the consumer product Safety Commission, include "A Handbook For Public Playground Safety". You can receive your free copy by calling 1-301-504-0580.

GENERAL ASSEMBLY INSTRUCTIONS:

Check all the parts and hardware with the packing list to be sure you have received everything needed to assemble this product. Contact Your Local Distributor with notification of any missing or damaged parts. Contact must be made within 10 days of receipt of your order. Only hand-tighten nuts & bolts on initial assembly. Final tightening should be done **EVENLY** after final assembly when unit has been plumbed & leveled. After assembly is complete, any ends of bolts protruding beyond nuts should be cut off and/or peened over to remove any sharp edges. Go over entire unit to file smooth any sharp edges or projections that may have been caused by rough handling in shipping or installation. T-Clamps are designed for both one and two bolt connections. In many situations only one bolt is required. See specific assembly instructions. On products with platforms install 1 - 2 degrees off level to facilitate water drainage.

GENERAL MAINTENANCE INSTRUCTIONS:

Check **MONTHLY** for loose bolts, damaged or broken parts. Tighten and/or replace immediately.

SPECIFIC ASSEMBLY INSTRUCTIONS:

NOTE: Slide should be installed in shaded areas or face **NORTH** to prevent direct Sun on Slide's Chute.

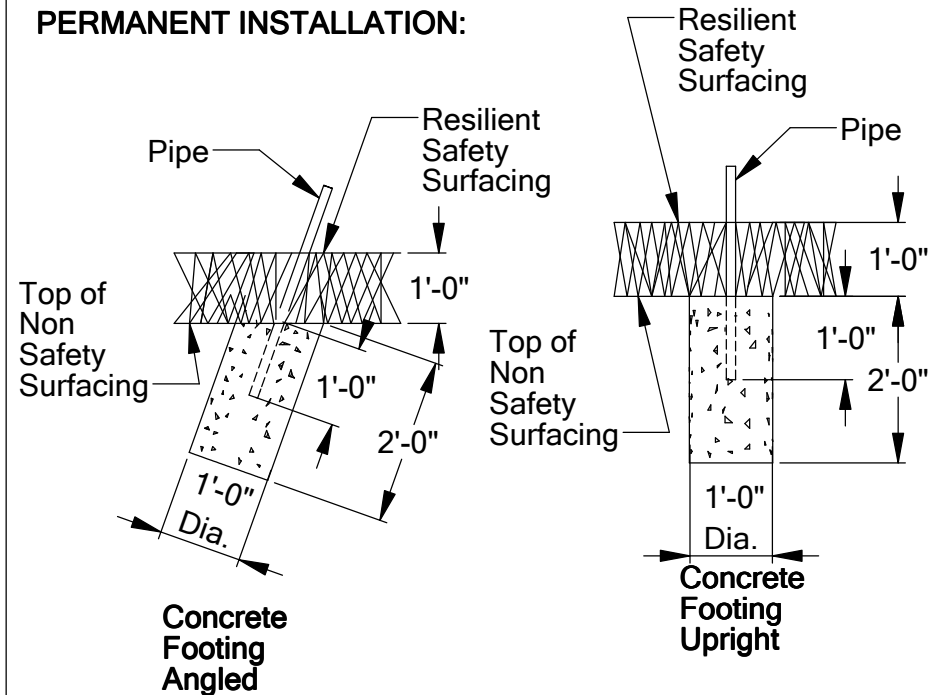
NOTE: All threaded ends of bolts protruding beyond nuts must be cut off and/or peened to eliminate sharp edges. **NO** more than two threads should extend beyond face of nut. All washers, "T" nuts, and other fastener hardware used on round pipe or tubing must be hammered down to conform to the curved underlying surface to eliminate catch points.

- Step 1: Mark & dig footing holes per footing diagram.
- Step 2: Assemble Platform on the ground. Attach Guardrail Leg Assemblies. See Detail A. Attach Slide Leg. See Detail E & F.
- Step 3: Turn right side up & brace in footing holes. Length of pipe below intended level of Resilient Surfacing should be 24" Attach Slide Entrance Rail. See Detail G.
- Step 4: Attach Stair Assembly & Stair Hand Rails to Guardrail Leg Assembly. See Detail B & C.
- Step 5: Attach plastic Slide to Platform. See Detail D.
- Step 6: Plumb & Level. Tighten all nuts & bolts so that lock washers are flat. Pour Concrete. Wait 48 hours before removing braces, installing Resilient Surfacing & using equipment.
- Step 7: Attach Warning Label and Manufacturer's Identification Label to a clean surface. The Labels should be attached in a location where they are clearly visible and legible and away from normal hand and foot placement areas. The Labels must be replaced if they become illegible, destroyed or removed. Contact your distributor for replacement Labels.

GENERAL USE/FALL ZONE & FOOTING RECOMMENDATIONS:

Stationary & Portable Equipment - Use/Fall Zones should extend a minimum of 6 feet in all directions from the perimeter of the equipment ground space. This area should be covered with the required amount of Resilient Safety Surfacing Material. For some equipment Use/Fall Zones can overlap. See consumer product safety commission guidelines. Diameter & depth of footing illustration are satisfactory in most applications for pipe sizes up to 2-3/8" diameter. Varying soil & climatic conditions may require deeper & heavier footings in some areas. Check Local Building Codes.

PERMANENT INSTALLATION:



If Resilient Surfacing is to be less than 12", then additional pipe should be put in concrete to maintain proper finish grade for equipment.

